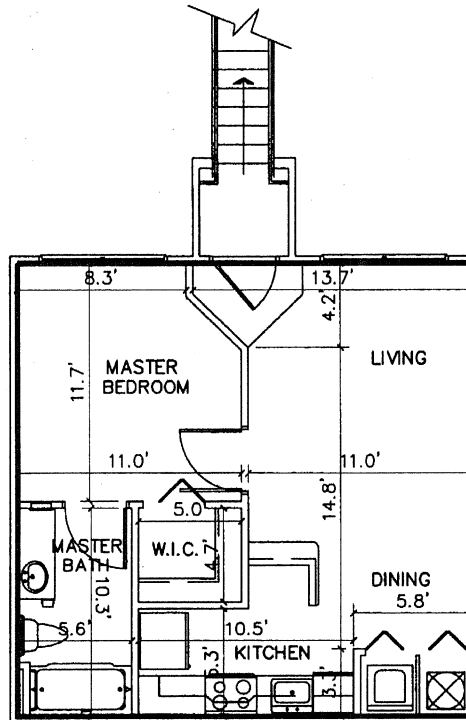


UNIT TYPE A
ON FIRST FLOOR



UNIT TYPE A
ON SECOND FLOOR

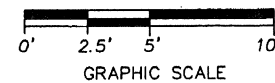
TYPE I
BUILDINGS 5651 (6), 5611 (10), 5510 (14),
5551 (19), 5550 (22), 5571 (23),
5581 (24)

UNITS
SECOND FLOOR: 202

TYPE III
BUILDINGS 5121 (1), 5501 (12), 5531 (17),
5540 (20), 5560 (25), 5591 (26),
5601 (28)

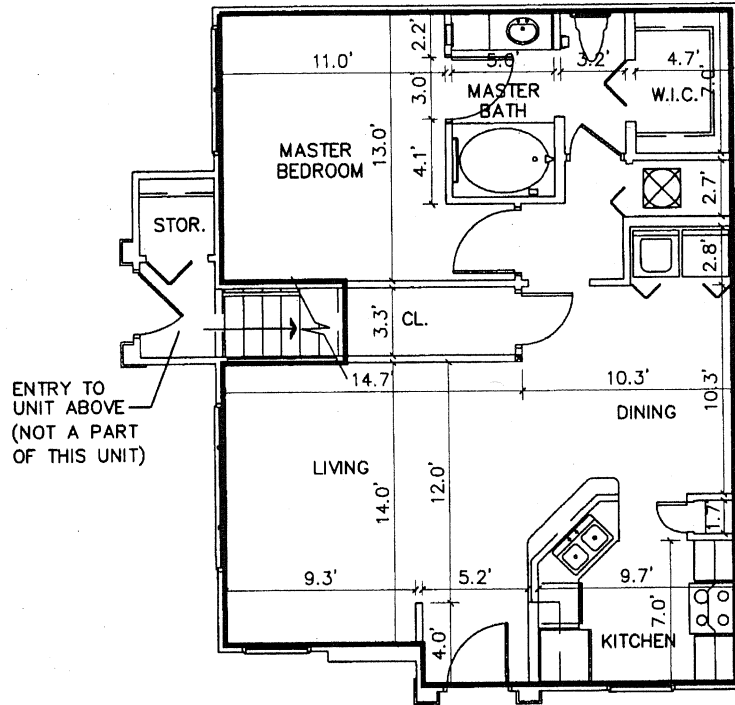
UNITS
FIRST FLOOR: 104

ADMIRALS WALK,
A CONDOMINIUM



LEGEND
— UNIT LIMIT

J. BONFILL & ASSOCIATES, INC.
ARCHITECTS-LAND SURVEYORS-PLANNERS
9360 S.W. 72nd STREET, MIAMI, FLORIDA 33173
PH. (305) 598-8383, FAX (305) 598-0023
DATE: January 7th, 2005



UNIT TYPE B
ON FIRST FLOOR

LEGEND
— UNIT LIMIT

TYPE I
BUILDINGS 5651 (6), 5611 (10), 5510 (14),
5551 (19), 5550 (22), 5571 (23),
5581 (24)

UNITS
FIRST FLOOR: 101, 102

TYPE II
BUILDINGS 5711 (2), 5691 (4), 5641 (7),
5631 (8), 5500 (11), 5520 (16),
5561 (21)

UNITS
FIRST FLOOR: 101, 102

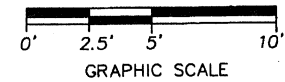
TYPE IV
BUILDINGS 5681 (5), 5521 (15), 5570 (27)

UNITS
FIRST FLOOR: 101, 102

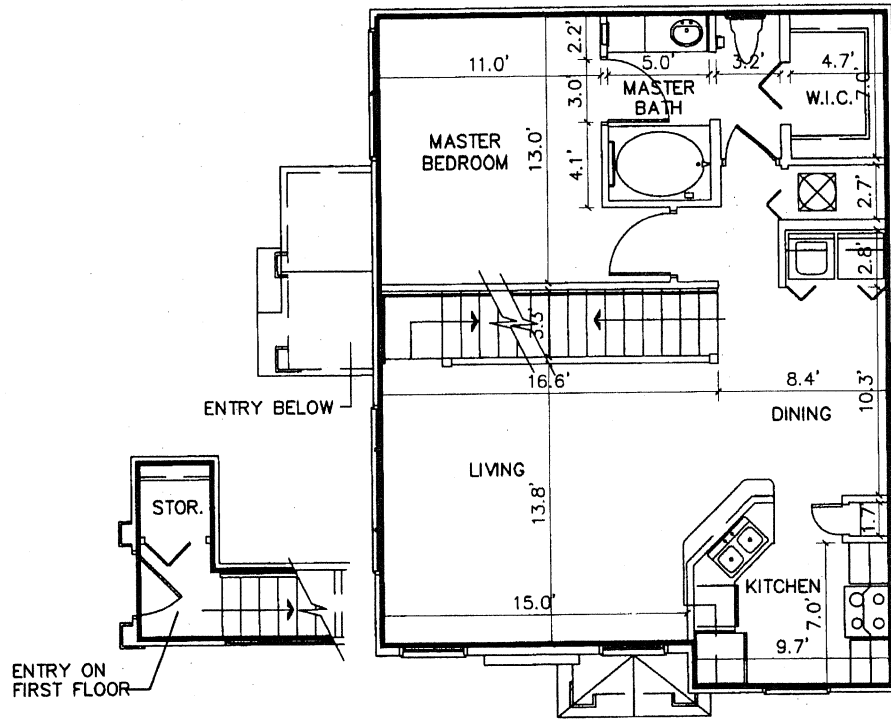
TYPE V
BUILDINGS 5701 (3), 5621 (9), 5511 (13),
5541 (18)

UNITS
FIRST FLOOR: 101, 102

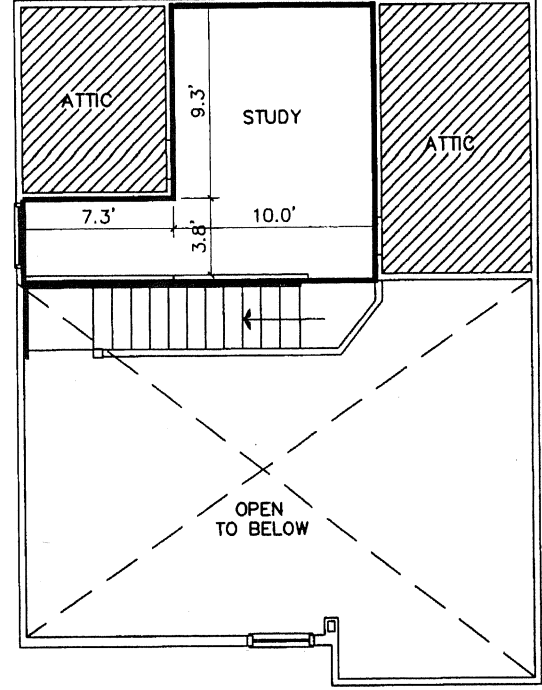
ADMIRALS WALK,
A CONDOMINIUM



J. BONFILL & ASSOCIATES, INC.
ARCHITECTS-LAND SURVEYORS-PLANNERS
9360 S.W. 72nd STREET, MIAMI, FLORIDA 33173
PH. (305) 598-8383, FAX (305) 598-0023
DATE: January 7th, 2005



UNIT TYPE B2L
ON SECOND FLOOR



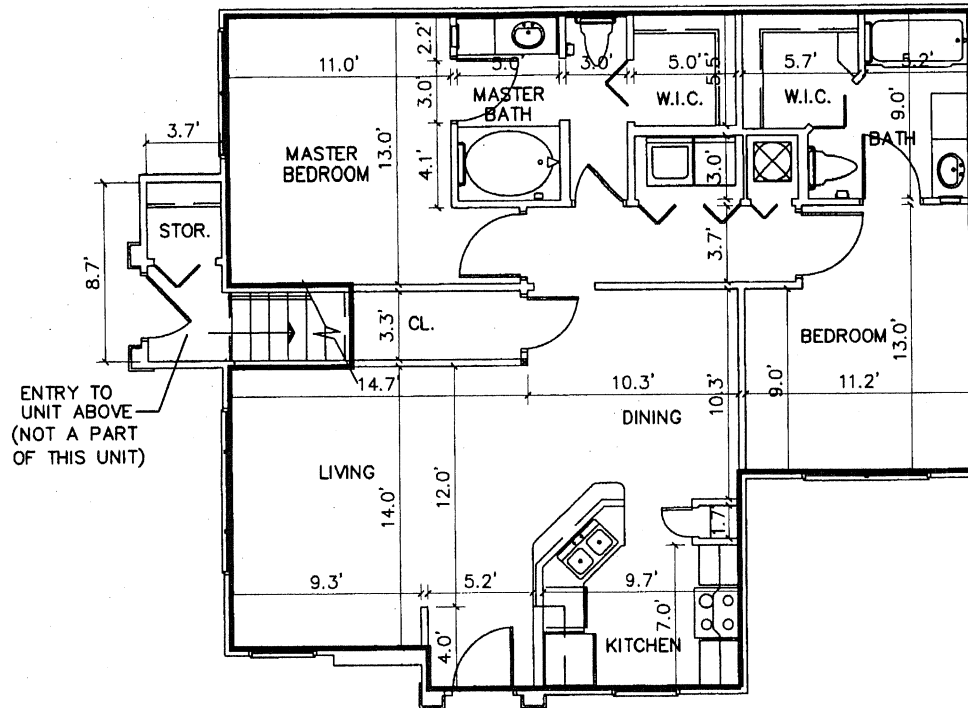
UNIT TYPE B2L
LOFT

LEGEND
 — UNIT LIMIT
 ▨ LIMITED COMMON ELEMENT

TYPE I
 BUILDINGS 5651 (6), 5611 (10), 5510 (14),
 5551 (19), 5550 (22), 5571 (23),
 5581 (24)
 UNITS
 FIRST FLOOR: 201, 203

ADMIRALS WALK,
 A CONDOMINIUM
 0' 2.5' 5' 10'
 GRAPHIC SCALE

J. BONFILL & ASSOCIATES, INC.
 ARCHITECTS-LAND SURVEYORS-PLANNERS
 9360 S.W. 72nd STREET, MIAMI, FLORIDA 33173
 PH. (305) 598-8383, FAX (305) 598-0023
 DATE: January 7th, 2005



UNIT TYPE C
ON FIRST FLOOR

LEGEND
UNIT LIMIT

TYPE I
BUILDINGS 5651 (6), 5611 (10), 5510 (14),
5551 (19), 5550 (22), 5571 (23),
5581 (24)

UNITS
FIRST FLOOR: 103, 104

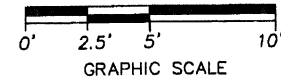
TYPE II
BUILDINGS 5711 (2), 5691 (4), 5641 (7),
5631 (8), 5500 (11), 5520 (16),
5561 (21)

UNITS
FIRST FLOOR: 103, 104

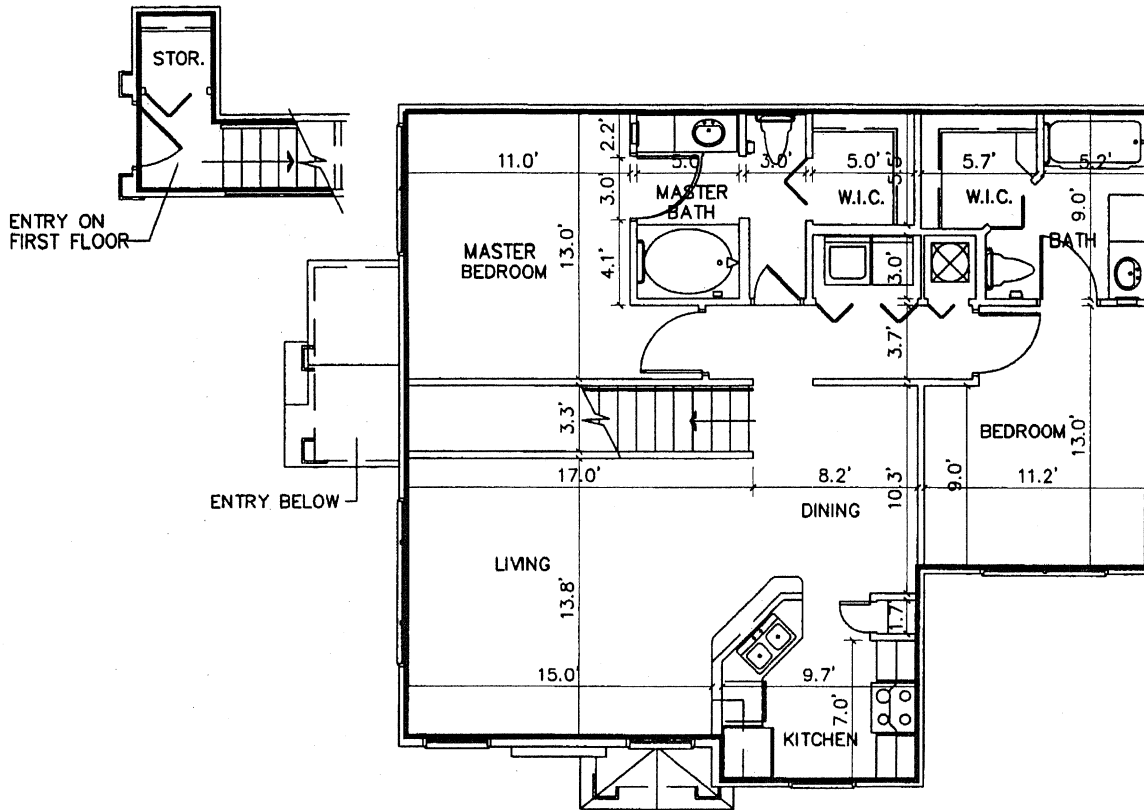
TYPE III
BUILDINGS 5121 (1), 5501 (12), 5531 (17),
5540 (20), 5560 (25), 5591 (26),
5601 (28)

UNITS
FIRST FLOOR: 101, 102, 103, 105

ADMIRALS WALK,
A CONDOMINIUM



J. BONFILL & ASSOCIATES, INC.
ARCHITECTS-LAND SURVEYORS-PLANNERS
9360 S.W. 72nd STREET, MIAMI, FLORIDA 33173
PH. (305) 598-8383, FAX (305) 598-0023
DATE: January 7th, 2005

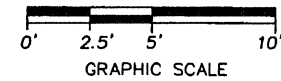


UNIT TYPE C2
ON SECOND FLOOR

TYPE II
BUILDINGS 5711 (2), 5691 (4), 5641 (7),
5631 (8), 5500 (11), 5520 (16),
5561 (21)

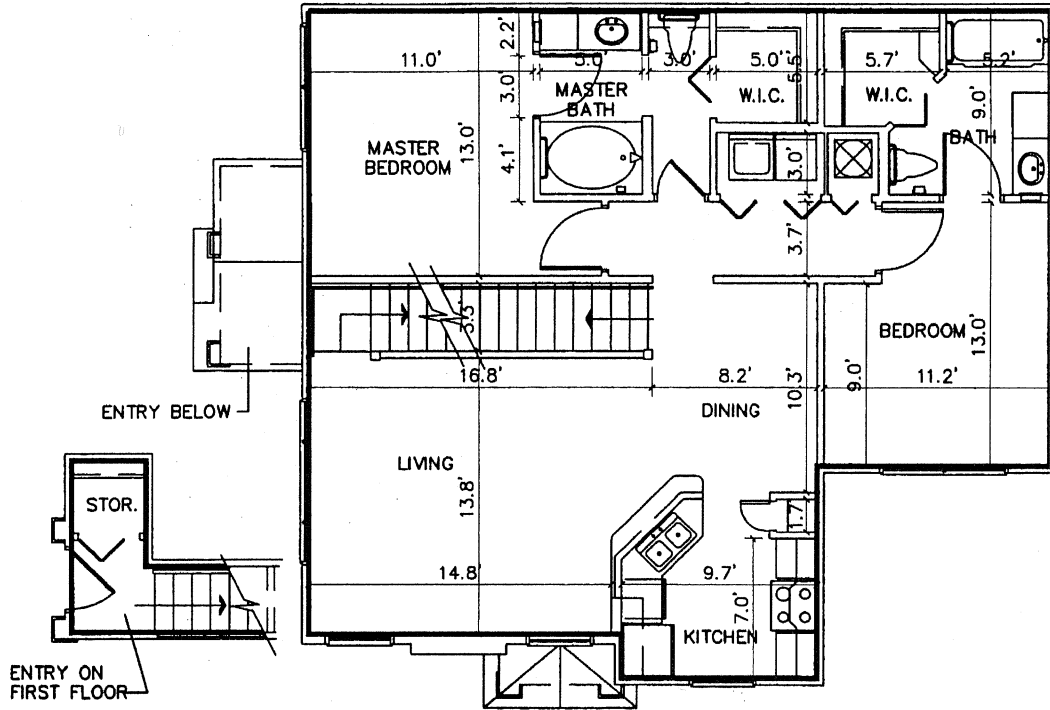
UNITS
SECOND FLOOR: 201, 202, 203, 204

ADMIRALS WALK,
A CONDOMINIUM

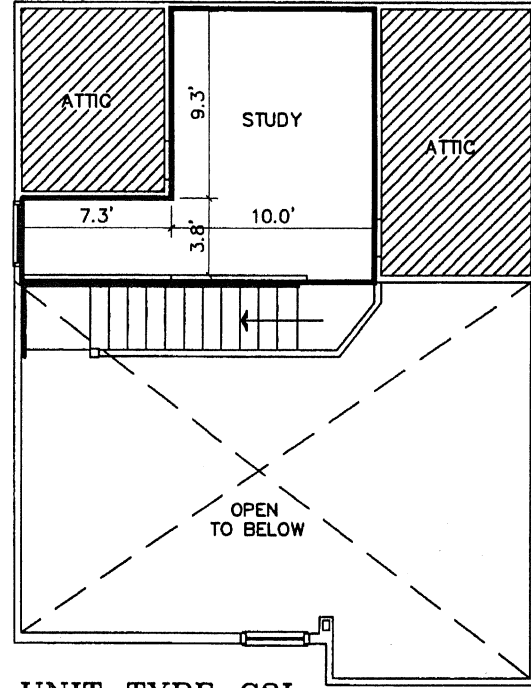


LEGEND
— UNIT LIMIT

J. BONFILL & ASSOCIATES, INC.
ARCHITECTS—LAND SURVEYORS—PLANNERS
9360 S.W. 72nd STREET, MIAMI, FLORIDA 33173
PH. (305) 598-8383, FAX (305) 598-0023
DATE: January 7th, 2005



UNIT TYPE C2L
ON SECOND FLOOR



UNIT TYPE C2L
LOFT

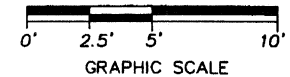
ADMIRALS WALK,
A CONDOMINIUM

TYPE I
BUILDINGS 5651 (6), 5611 (10),
5510 (14), 5551 (19),
5550 (22), 557 (23),
5581 (24)

TYPE III
BUILDINGS 5121 (1), 5501 (12),
5531 (17), 5540 (20),
5560 (25), 5591 (26),
5601 (28)

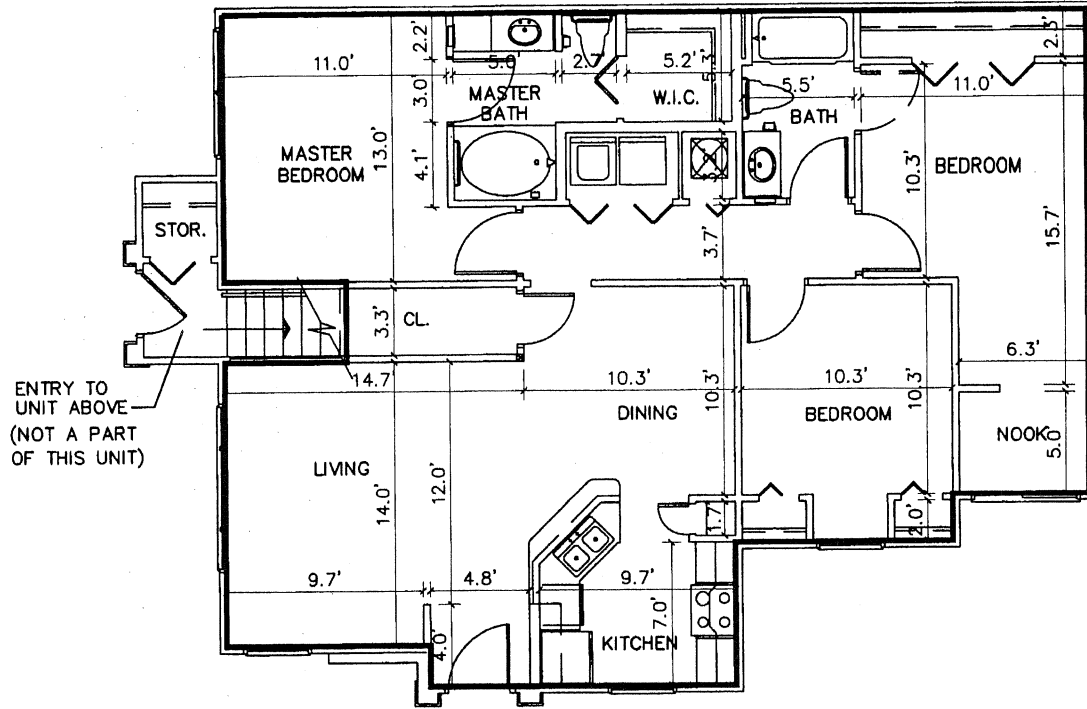
UNITS
SECOND FLOOR: 204, 205

UNITS
FIRST FLOOR: 201, 203, 204,
205



J. BONFILL & ASSOCIATES, INC.
ARCHITECTS—LAND SURVEYORS—PLANNERS
9360 S.W. 72nd STREET, MIAMI, FLORIDA 33173
PH. (305) 598-8383, FAX (305) 598-0023
DATE: January 7th, 2005

LEGEND
— UNIT LIMIT
▨ LIMITED COMMON ELEMENT



UNIT TYPE D
ON FIRST FLOOR

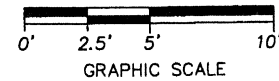
TYPE IV
BUILDINGS 5681 (5), 5521 (15), 5570 (27)

UNITS
FIRST FLOOR: 103, 104

TYPE V
BUILDINGS 5701 (3), 5621 (9), 5511 (13),
5541 (18)

UNITS
FIRST FLOOR: 103, 104

ADMIRALS WALK,
A CONDOMINIUM



J. BONFILL & ASSOCIATES, INC.

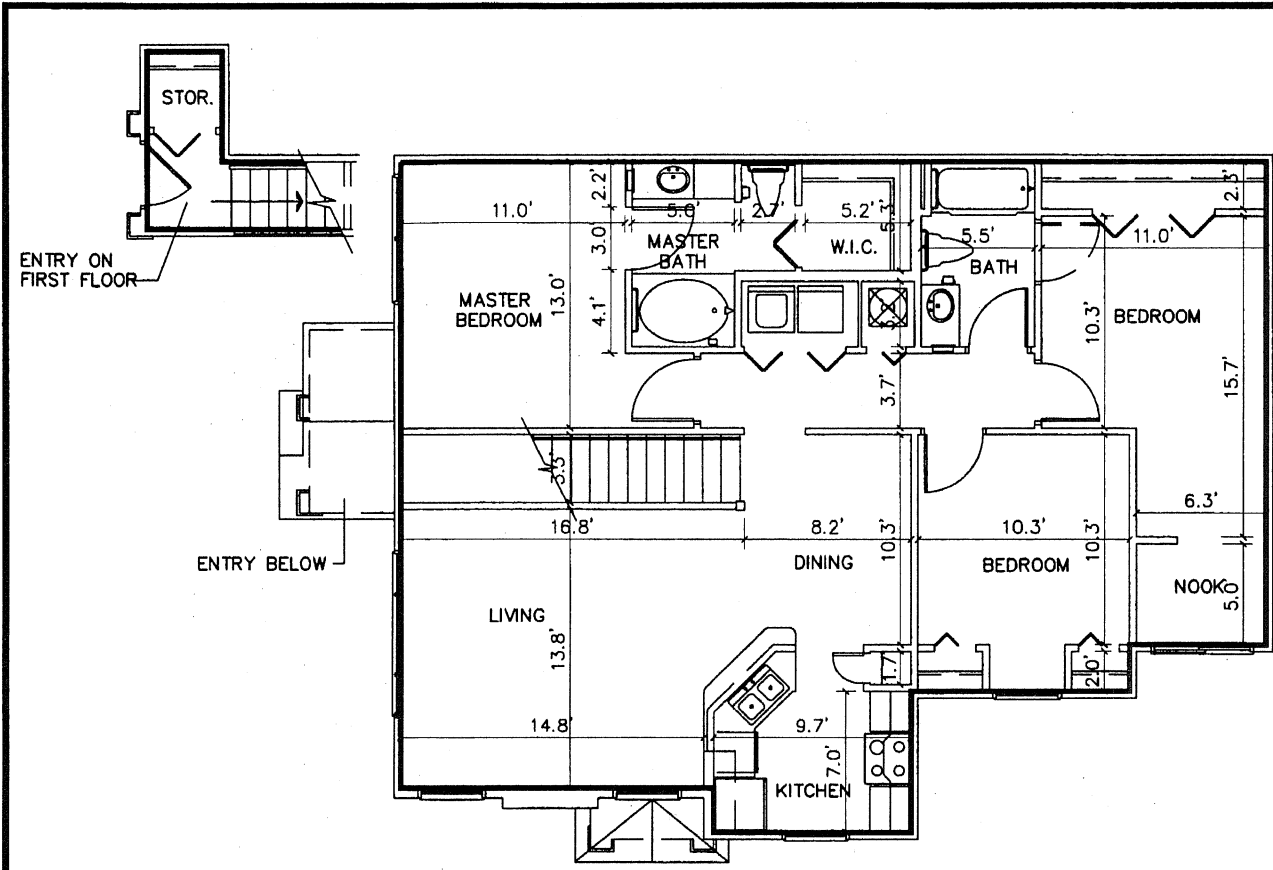
ARCHITECTS-LAND SURVEYORS-PLANNERS

9360 S.W. 72nd STREET, MIAMI, FLORIDA 33173

PH. (305) 598-8383, FAX (305) 598-0023

DATE: January 7th, 2005

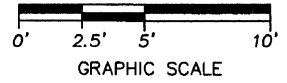
LEGEND
UNIT LIMIT



UNIT TYPE D2
ON SECOND FLOOR

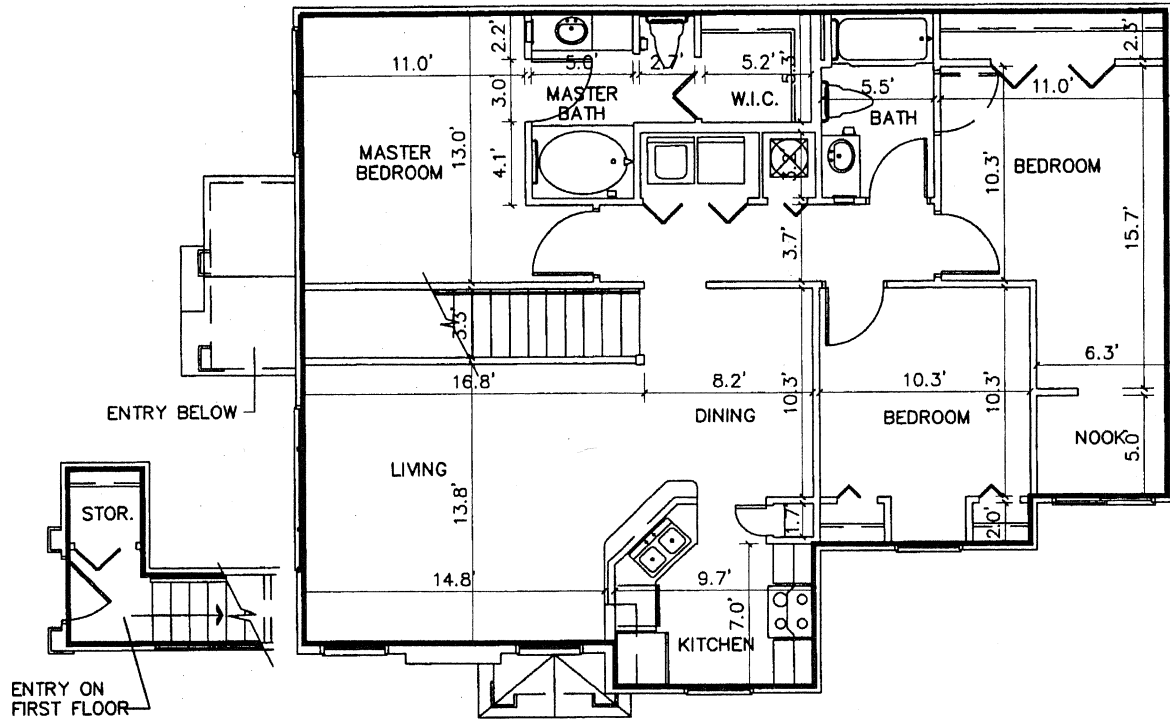
TYPE IV
BUILDINGS 5681 (5), 5521 (15), 5570 (27)
UNITS
SECOND FLOOR: 201, 202, 203, 204

ADMIRALS WALK,
A CONDOMINIUM

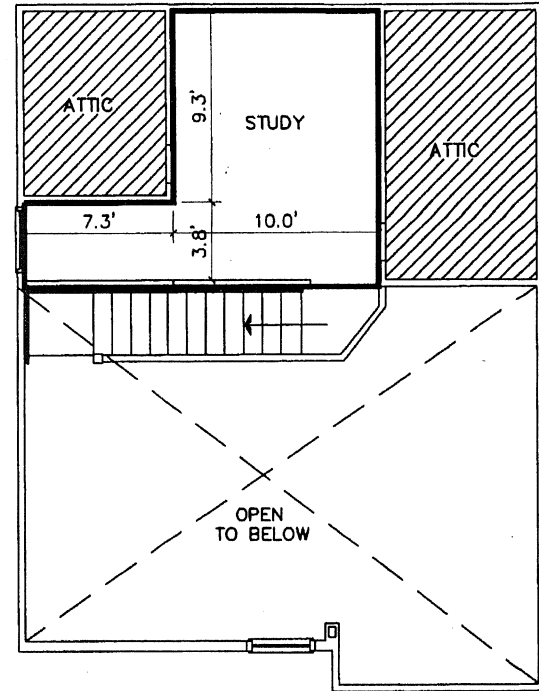


J. BONFILL & ASSOCIATES, INC.
ARCHITECTS-LAND SURVEYORS-PLANNERS
9360 S.W. 72nd STREET, MIAMI, FLORIDA 33173
PH. (305) 598-8383, FAX (305) 598-0023
DATE: January 7th, 2005

LEGEND
— UNIT LIMIT



UNIT TYPE D2L
SECOND FLOOR

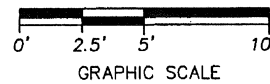


UNIT TYPE D2L
LOFT

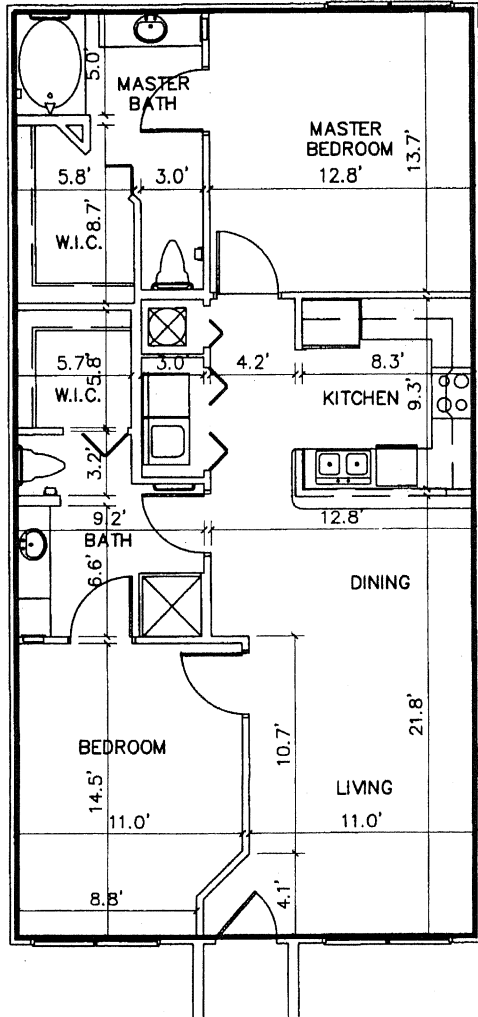
TYPE V
BUILDINGS 5701 (3), 5621 (9),
5511 (13), 5541 (18)

UNITS
SECOND FLOOR: 201, 202,
203, 204

LEGEND
— UNIT LIMIT
▨ LIMITED COMMON ELEMENT



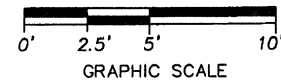
ADMIRALS WALK,
A CONDOMINIUM
J. BONFILL & ASSOCIATES, INC.
ARCHITECTS-LAND SURVEYORS-PLANNERS
9360 S.W. 72nd STREET, MIAMI, FLORIDA 33173
PH. (305) 598-8383, FAX (305) 598-0023
DATE: January 7th, 2005



TYPE III
 BUILDINGS 5121 (1), 5501 (12), 5531 (17),
 5540 (20), 5560 (25), 5591 (26),
 5601 (28)

UNITS
 SECOND FLOOR: 202

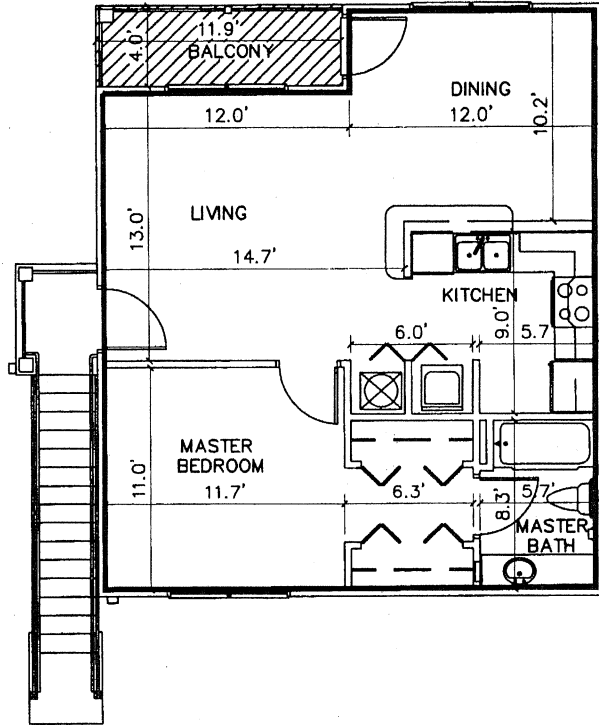
**ADMIRALS WALK,
 A CONDOMINIUM**



**UNIT TYPE E
 SECOND FLOOR**

J. BONFILL & ASSOCIATES, INC.
 ARCHITECTS-LAND SURVEYORS-PLANNERS
 9360 S.W. 72nd STREET, MIAMI, FLORIDA 33173
 PH. (305) 598-8383, FAX (305) 598-0023
 DATE: January 7th, 2005

LEGEND
 — UNIT LIMIT

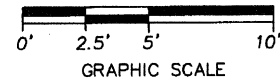


UNIT TYPE F
SECOND FLOOR

TYPE VI
BUILDING 5731 (29), 5741 (30)

UNITS
SECOND FLOOR: 201, 202

ADMIRALS WALK,
A CONDOMINIUM



- LEGEND
- UNIT LIMIT
 - LIMITED COMMON ELEMENT

J. BONFILL & ASSOCIATES, INC.
ARCHITECTS-LAND SURVEYORS-PLANNERS
9360 S.W. 72nd STREET, MIAMI, FLORIDA 33173
PH. (305) 598-8383, FAX (305) 598-0023
DATE: January 7th, 2005